

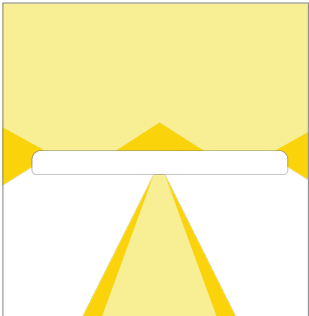
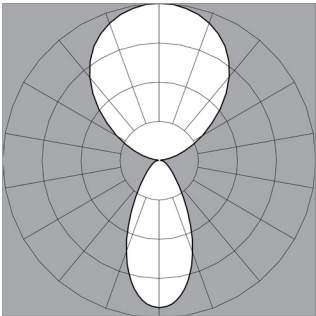
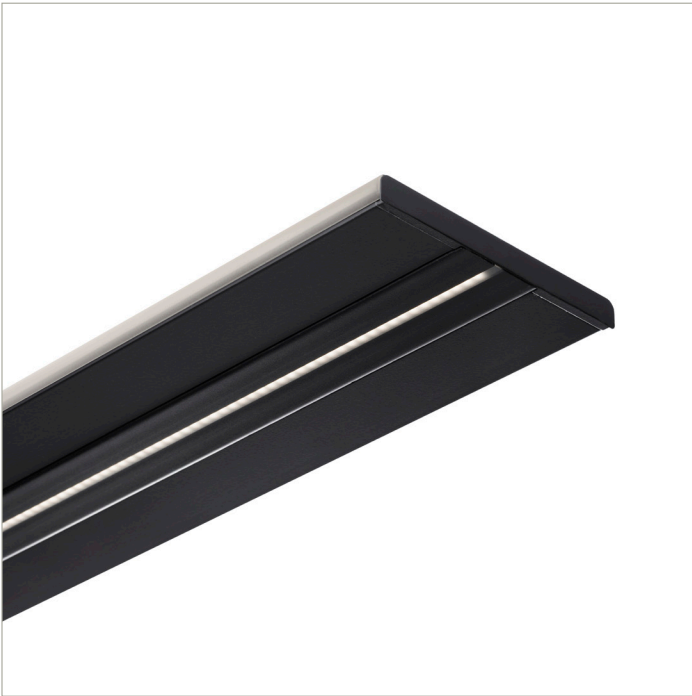
**IES Report**

**ZipThree® | Ceiling Cable | 707 | Symmetric with EdgeGlow, up | 40° Symmetric, down | 80 CRI | LO**  
 707-Z3-XX-4-48-CC-XX-XX-XX-X-0-Z-LO-35-U2S1-0-BL-X

	2700K	3000K	3500K	4000K
Efficacy - Lumens per Watt	74	76	77	79
Total Lumens, 4' rail length (1219mm)	2252	2323	2370	2418
Lumens per foot (305mm)	563	581	593	604
Lumens per foot UP (305mm)	417	430	439	447
Lumens per foot DOWN (305mm)	146	151	154	157
Input Power (W), 4' rail length (1219mm)	30.8	30.8	30.8	30.8
Watts per foot (305mm)	7.8	7.8	7.8	7.8
CRI	85	85	85	85

Due to the large number of options in Vode's product offering, most Vode IES reports are factored reports prepared from source reports. Source reports are the IES test reports prepared for Vode by an NVLAP accredited photometric test laboratory. Factored reports are based on data from the Vode source reports.

If the data above is in black, it is directly from a Vode source report. If it is in grey, it is factored from Vode source reports. Reference details on Vode source reports can be found on the [IES File Finder](#) page on [vode.com](#).



IES Report

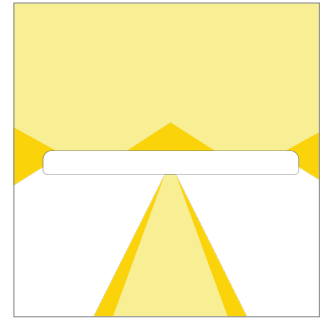
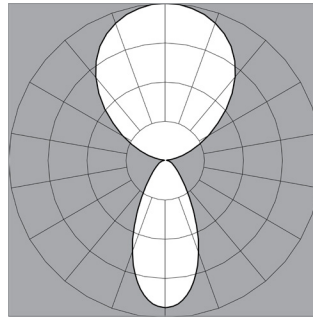
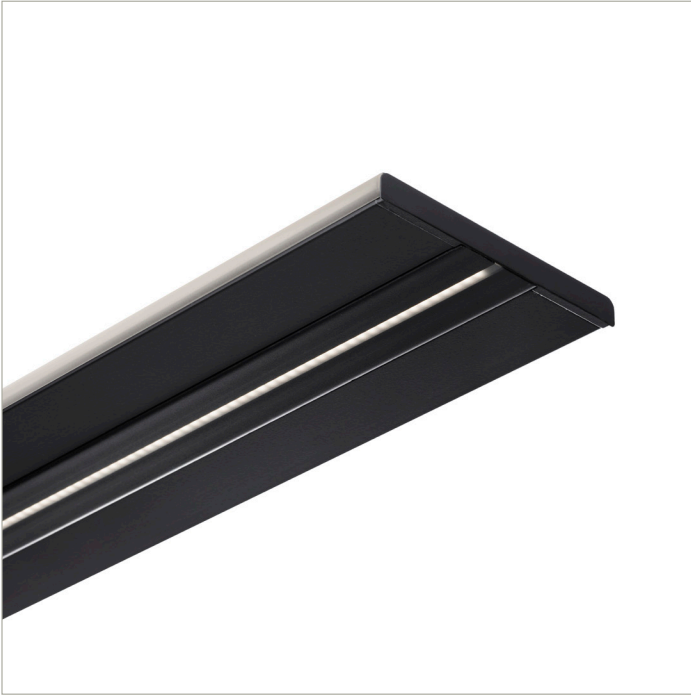
ZipThree® | Ceiling Cable | 707 | Symmetric with EdgeGlow, up | 40° Symmetric, down | 80 CRI | SO

707-Z3-XX-4-48-CC-XX-XX-XX-X-0-Z-SO-35-U2S1-0-BL-X

	2700K	3000K	3500K	4000K
Efficacy - Lumens per Watt	88	91	93	95
Total Lumens, 4' rail length (1219mm)	4503	4646	4740	4835
Lumens per foot (305mm)	1126	1161	1185	1209
Lumens per foot UP (305mm)	833	860	877	895
Lumens per foot DOWN (305mm)	292	302	308	314
Input Power (W), 4' rail length (1219mm)	51.3	51.3	51.3	51.3
Watts per foot (305mm)	12.9	12.9	12.9	12.9
CRI	85	85	85	85

Due to the large number of options in Vode's product offering, most Vode IES reports are factored reports prepared from source reports. Source reports are the IES test reports prepared for Vode by an NVLAP accredited photometric test laboratory. Factored reports are based on data from the Vode source reports.

If the data above is in black, it is directly from a Vode source report. If it is in grey, it is factored from Vode source reports. Reference details on Vode source reports can be found on the [IES File Finder](#) page on [vode.com](#).



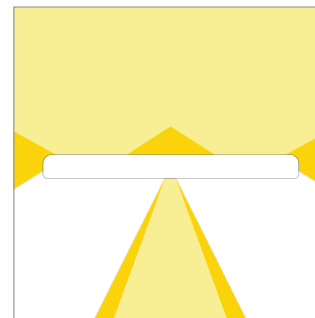
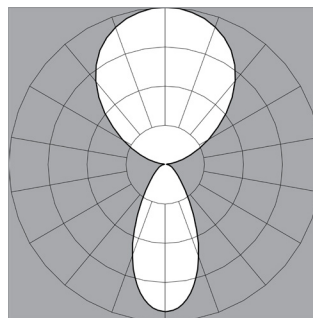
**IES Report**

**ZipThree® | Ceiling Cable | 707 | Symmetric with EdgeGlow, up | 40° Symmetric, down | 80 CRI | HO**  
 707-Z3-XX-4-48-CC-XX-XX-XX-X-0-Z-HO-35-U2S1-0-BL-X

	2700K	3000K	3500K	4000K
Efficacy - Lumens per Watt	80	83	85	86
Total Lumens, 4' rail length (1219mm)	8556	8827	9007	9187
Lumens per foot (305mm)	2139	2207	2252	2297
Lumens per foot UP (305mm)	1583	1633	1667	1615
Lumens per foot DOWN (305mm)	556	573	585	567
Input Power (W), 4' rail length (1219mm)	107.2	107.2	107.2	107.2
Watts per foot (305mm)	26.8	26.8	26.8	26.8
CRI	85	85	85	85

Due to the large number of options in Vode's product offering, most Vode IES reports are factored reports prepared from source reports. Source reports are the IES test reports prepared for Vode by an NVLAP accredited photometric test laboratory. Factored reports are based on data from the Vode source reports.

If the data above is in black, it is directly from a Vode source report. If it is in grey, it is factored from Vode source reports. Reference details on Vode source reports can be found on the [IES File Finder](#) page on [vode.com](#).



## IES Report

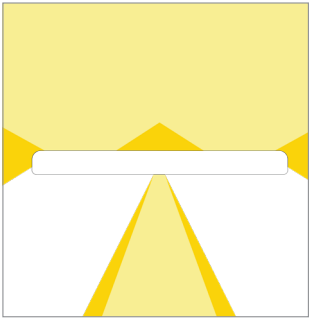
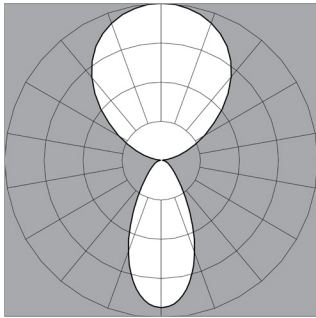
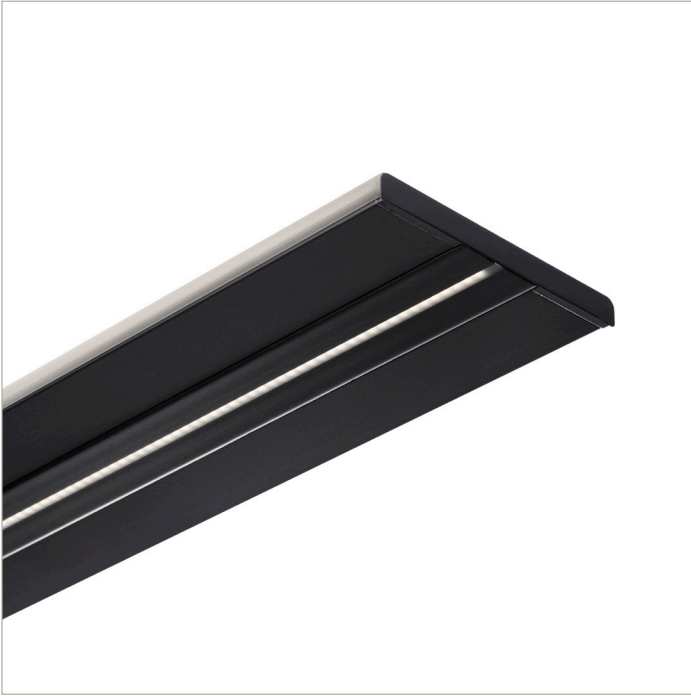
### ZipThree® | Ceiling Cable | 707 | Symmetric with EdgeGlow, up | 40° Symmetric, down | 90 CRI | LO

707-Z3-XX-4-48-CC-XX-XX-XX-X-0-Z-LO-359-U2S1-0-BL-X

	2700K	3000K	3500K	4000K
Efficacy - Lumens per Watt	64	65	67	70
Total Lumens, 4' rail length (1219mm)	1941	2002	2043	2084
Lumens per foot (305mm)	485	501	511	521
Lumens per foot UP (305mm)	359	371	378	386
Lumens per foot DOWN (305mm)	126	130	133	135
Input Power (W), 4' rail length (1219mm)	30.8	30.8	30.8	30.8
Watts per foot (305mm)	7.8	7.8	7.8	7.8
CRI*	96	96	96	96

Due to the large number of options in Vode's product offering, most Vode IES reports are factored reports prepared from source reports. Source reports are the IES test reports prepared for Vode by an NVLAP accredited photometric test laboratory. Factored reports are based on data from the Vode source reports.

If the data above is in black, it is directly from a Vode source report. If it is in grey, it is factored from Vode source reports. Reference details on Vode source reports can be found on the [IES File Finder](#) page on [vode.com](http://vode.com).



**IES Report**

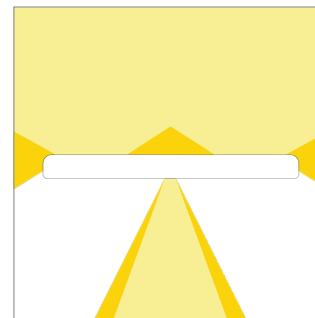
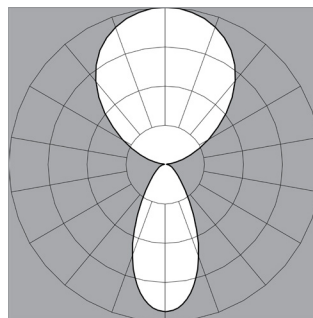
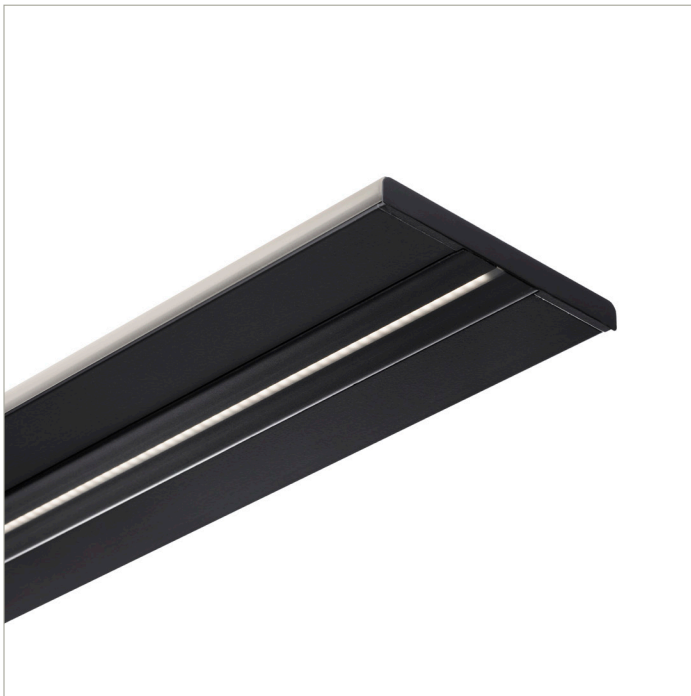
**ZipThree® | Ceiling Cable | 707 | Symmetric with EdgeGlow, up | 40° Symmetric, down | 90 CRI | SO**  
**707-Z3-XX-4-48-CC-XX-XX-XX-X-0-Z-SO-359-U2S1-0-BL-X**

	2700K	3000K	3500K	4000K
Efficacy - Lumens per Watt	76	79	80	83
Total Lumens, 4' rail length (1219mm)	3882	4005	4087	4168
Lumens per foot (305mm)	971	1001	1022	1042
Lumens per foot UP (305mm)	718	741	756	771
Lumens per foot DOWN (305mm)	252	260	265	271
Input Power (W), 4' rail length (1219mm)	51.3	51.3	51.3	51.3
Watts per foot (305mm)	12.9	12.9	12.9	12.9
CRI*	96	96	96	96

Due to the large number of options in Vode's product offering, most Vode IES reports are factored reports prepared from source reports. Source reports are the IES test reports prepared for Vode by an NVLAP accredited photometric test laboratory. Factored reports are based on data from the Vode source reports.

If the data above is in black, it is directly from a Vode source report. If it is in grey, it is factored from Vode source reports. Reference details on Vode source reports can be found on the [IES File Finder](#) page on [vode.com](#).

\* R9: ~74 @ 3500K



## IES Report

ZipThree® | Ceiling Cable | 707 | Symmetric with EdgeGlow, up | 40° Symmetric, down | 90 CRI | HO

707-Z3-XX-4-48-CC-XX-XX-XX-X-0-Z-HO-359-U2S1-0-BL-X

	2700K	3000K	3500K	4000K
Efficacy - Lumens per Watt	69	71	73	76
Total Lumens, 4' rail length (1219mm)	7376	7609	7764	7920
Lumens per foot (305mm)	1844	1902	1941	1980
Lumens per foot UP (305mm)	1365	1408	1437	1392
Lumens per foot DOWN (305mm)	479	494	504	489
Input Power (W), 4' rail length (1219mm)	107.2	107.2	107.2	107.2
Watts per foot (305mm)	26.8	26.8	26.8	26.8
CRI*	96	96	96	96

Due to the large number of options in Vode's product offering, most Vode IES reports are factored reports prepared from source reports. Source reports are the IES test reports prepared for Vode by an NVLAP accredited photometric test laboratory. Factored reports are based on data from the Vode source reports.

If the data above is in black, it is directly from a Vode source report. If it is in grey, it is factored from Vode source reports. Reference details on Vode source reports can be found on the [IES File Finder](#) page on [vode.com](http://vode.com).